

# Kalinzu Eco Lodge

## **The Journey to the Canopy:**

Mbarara to Kalinzu The drive from Mbarara to Kalinzu Eco Lodge is more than just a transit; it is a ritual of leaving the urban bustle behind and entering the ancient, misty world of the Chwezi kings.

## **1. Departure: Leaving the Land of Milk**

Leaving Mbarara City, you begin your ascent through the Ankole Plateau. Keep your camera ready as you pass local farms—you will see the iconic Ankole Longhorn cattle grazing against the backdrop of rolling hills. This is the very land where the legend of the Golden Bell (Omurebe) began.

## **2. The Igara Tea Highlands (The Green Sea)**

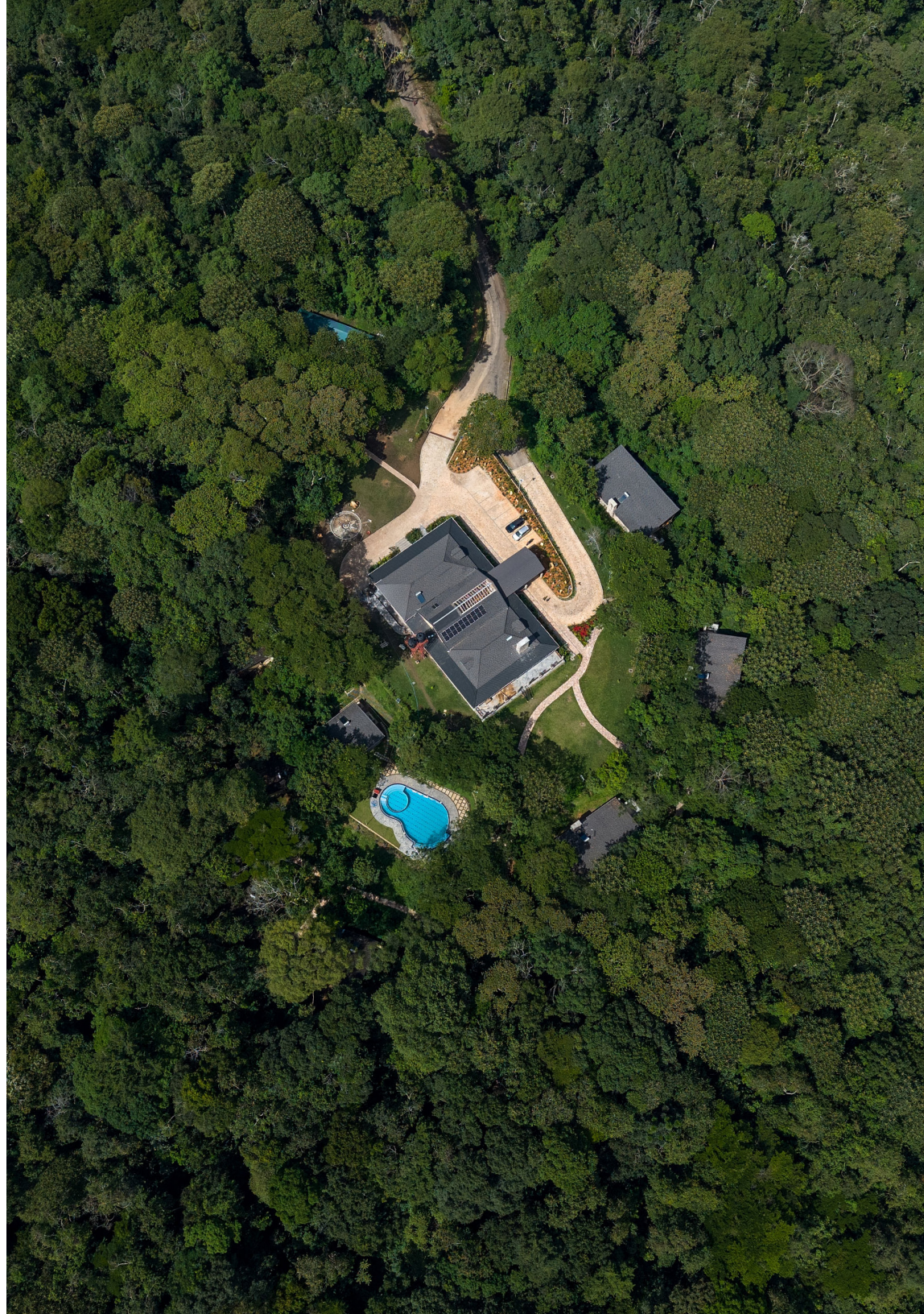
About 45 minutes into your journey, the landscape shifts dramatically. You will enter the Igara region, famous for its “endless green sea” of tea plantations.

### **The View:**

The geometric patterns of the tea bushes create a stunning 3D texture across the hills.

### **Photo Op:**

There are several safe pull-off points near the Bushenyi area where you can capture the panoramic views of the plantations meeting the horizon.





### 3. Navigating the Mbarara-Kasese Highway

The road is well-tarmacked but demands respect.

#### The “Winding Ridges”:

As you approach the Rift Valley escarpment, the road begins to snake. You will experience sharp bends with steep drop-offs that offer breathtaking views of the Queen Elizabeth National Park plains in the distance.

#### Drive Time:

While only 84.3 km, allow for the full 1 hour and 42 minutes. The beauty of the landscape often encourages a slower pace.

### 4. Entering the Cloud Forest (The Final Ascent)

As you climb toward the Kalinzu Forest Reserve, you will notice a sudden drop in temperature. The air becomes crisp and “thin,” often smelling of damp earth and moss.

#### The Mist:

It is common to drive through low-hanging clouds or “forest breath” as you reach the lodge’s elevation.

#### Arrival:

The entrance to Kalinzu Eco Lodge is marked by a transition from the tea estates into dense, primary rainforest.



### Pro-Traveler Tips Window Etiquette:

Keep your windows down for the last 15 minutes of the drive. The sounds of the forest—Colobus monkeys and Turacos—are the first to welcome you.

### Fuel Up:

Ensure you have a full tank before leaving Mbarara; while there are stations in Bushenyi, Mbarara offers the last major service centers. Weather Prep: Have a light jacket or sweater accessible.

### Navigation & Connectivity

While Google Maps and Apple Maps are reliable on the Mbarara-Kasese road, we recommend downloading the offline map of the Bushenyi/Kalinzu area, as the deep forest canopy can occasionally interfere with cellular signals, as soon as you arrive the Lodge there is free WIFI.

